



**Integration
Performance
Installation Guide**

Universal

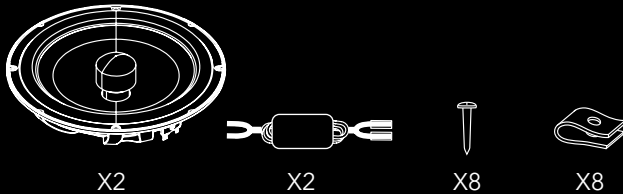
IP-UNI82

Dear Customer,

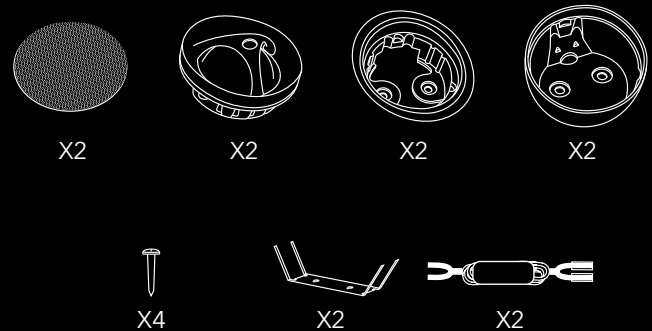
Thank you for choosing Morel for your car audio speaker solution. Morel prides itself on engineering and producing the best high-fidelity speaker systems. We hope you enjoy your Integration Performance sound system for years to come. If you have any questions, please contact your Morel dealer or Morel support at: www.morelhifi.com

Components and Mounting

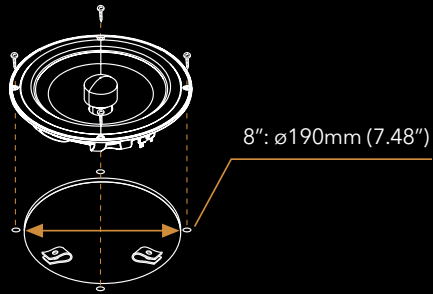
Woofer



Tweeter

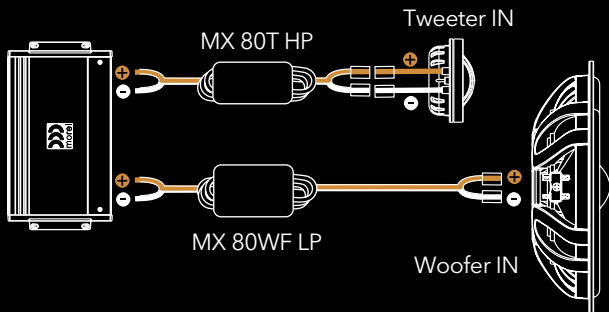


Woofer mounting



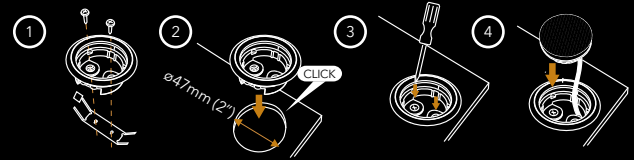
Connections

4-Ch Amplifier

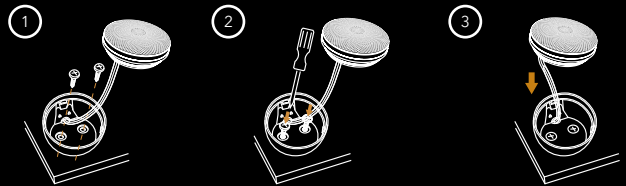


Tweeter

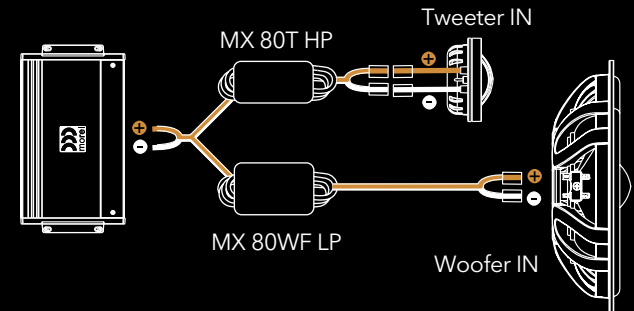
Flush Mount



Surface Mount



2-Ch Amplifier



Specifications

WOOFER	IP-UNI8MW
Nominal Impedance (ohm)	4
Power Handling Wrms	100
Max. Trans. Pwr Handling Wrms	200
Sensitivity (2.83 V/1M) dB	92
Frequency response Hz	40-20,000
Resonant Freq. Fs Hz	56
Voice Coil Diameter mm (inch)	25 (1)
DC Resistance (ohm)	3.1
Magnet System	Neodymium double magnet
HE-Magnetic Gap Height mm (inch)	4 (0.16)
B-Flux Density (T)	1.29
BL Product/BXL	4.9
Suspension Compliance CMS - mm/N	0.36
Electrical Q Factor QES	0.36
QTS	0.8
QMS	4.49
Mech. Resistance RMS- N * S / M	1.74
Moving Mass MMS - gr/ounce	22 (0.77)
Equiv. Can Air Load VAS - L (cu.ft ³)	26 (736.38)
Effective Piston Area SD sq.cm (sq.inch)	227 (35.18)
Cone Material	Treated Paper Composite Cone
Unit Diameter mm(inch)	210 (8.26)
Mounting Depth mm(inch)	48 (1.9)
Net Weight Kg (lb)	0.5 (1.1)

TWEETERS	MT 25
Nominal Impedance (ohm)	4
Power Handling Wrms	90
Max. Trans. Pwr Handling Wrms (10ms)	160
Sensitivity (2.83 V/1M) dB	91.5
Frequency Response Hz	1600-20000
FS Hz	1200
Voice Coil Diameter mm (inch)	25 (1)
Voice Coil Wire	Copper
Magnet System	Neodymium
Mounting Depth mm (inch)	20 (0.8)

CROSSOVERS	MX 80T HP	MX 80WF LP
Crossover Point	2700Hz/6dB	5000Hz/6dB

* Morel operates a policy of continuous products design improvement, consequently specifications are subject to alteration without prior notice

Wishing you many years of sound enjoyment!



Morel, Ness Ziona, 70400 Israel.
Tel: +972-8-9301161
Fax: +972-8-9301312
E-mail: info@morelhifi.com

Morel America, Chandler, AZ, USA
Toll free number: 1-877-667-3511
Fax: 1-718-721-1560
E-mail: info@morelamerica.com

www.morelhifi.com