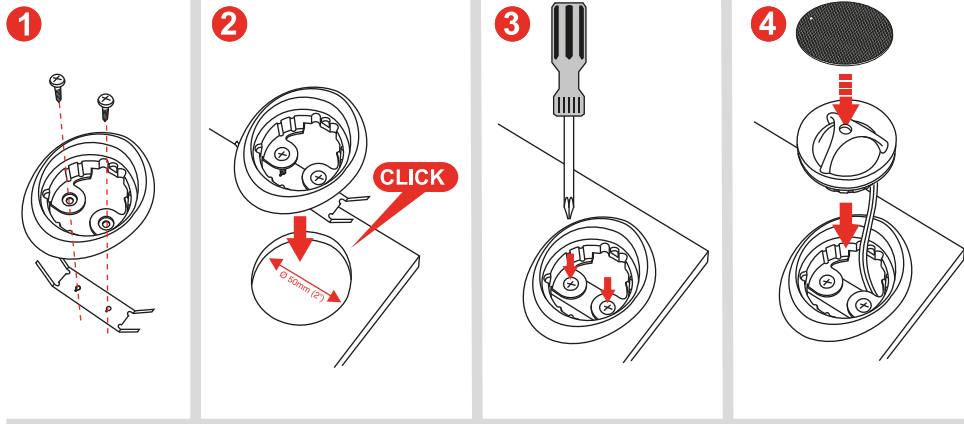
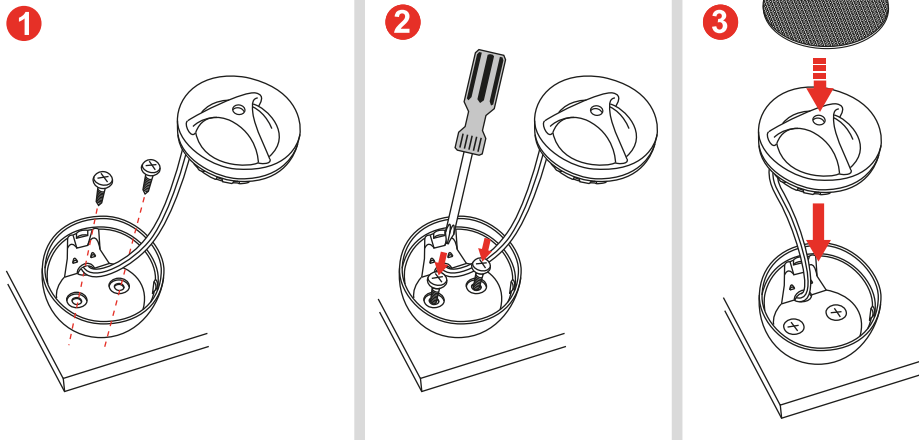


## Flush mounting for 50 mm (1.96") cutout



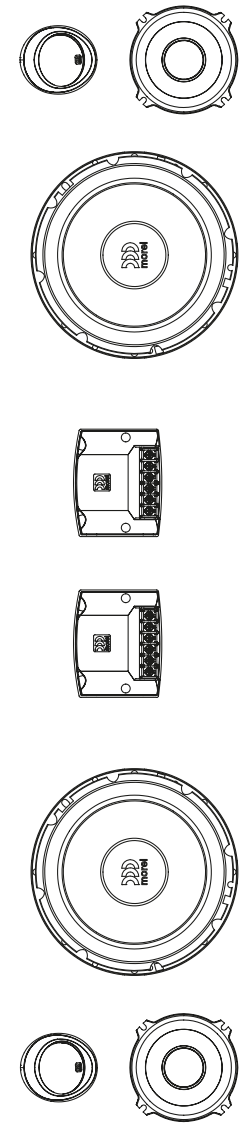
## Surface mounting option 2



## Specifications

### Maximo Ultra 603

Nominal Impedance	4 ohm
Power Handling	100W
Max. Transient Power Handling	180W
Sensitivity (2.83V/1M)	90.5dB
Frequency Response	50-20,000 Hz
Voice Coil Diameter	Woofer: 25mm(1") Tweeter: 25mm(1") Mld: 20mm(0.8")
Voice Coil Wire	Copper
Magnet System	Woofer: High grade ferrite magnet Tweeter: Neodymium
Mounting Depth	63mm (2.5")

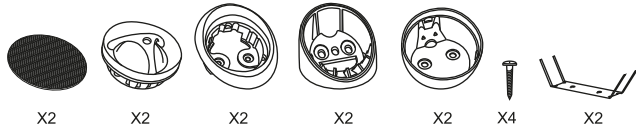


**maximo** ultra **MkII**  
Car Audio Component Speaker System

**603 6.5" 3 Way**

## content

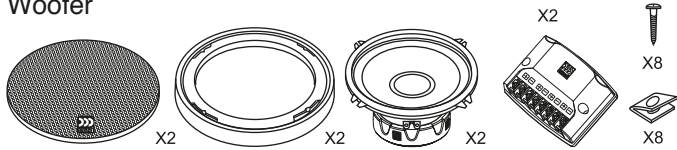
### Tweeter



### Mid range

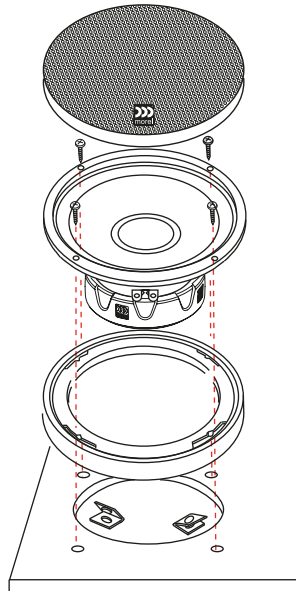


### Woofers

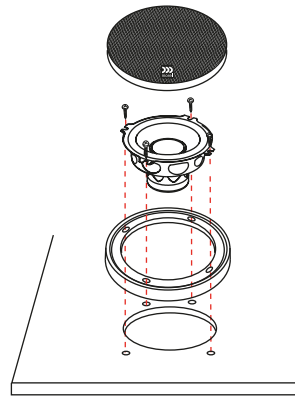


## Woofer and Mid mounting

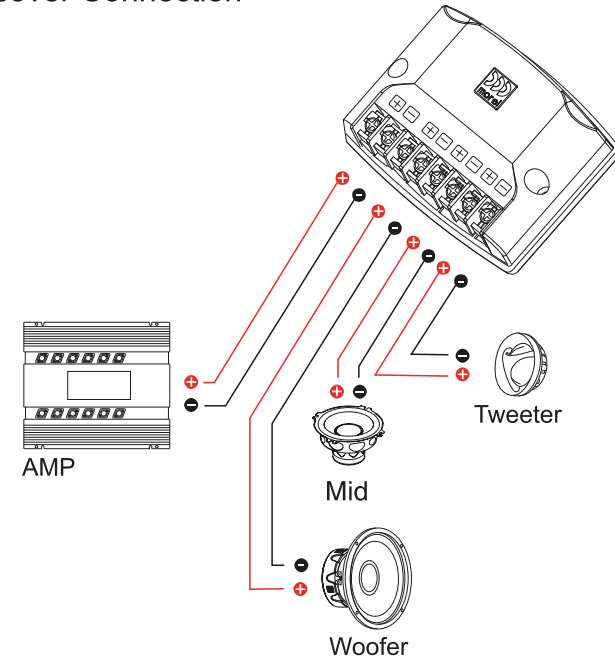
6.5"



2.5"



## Crossover Connection



## Surface mounting

